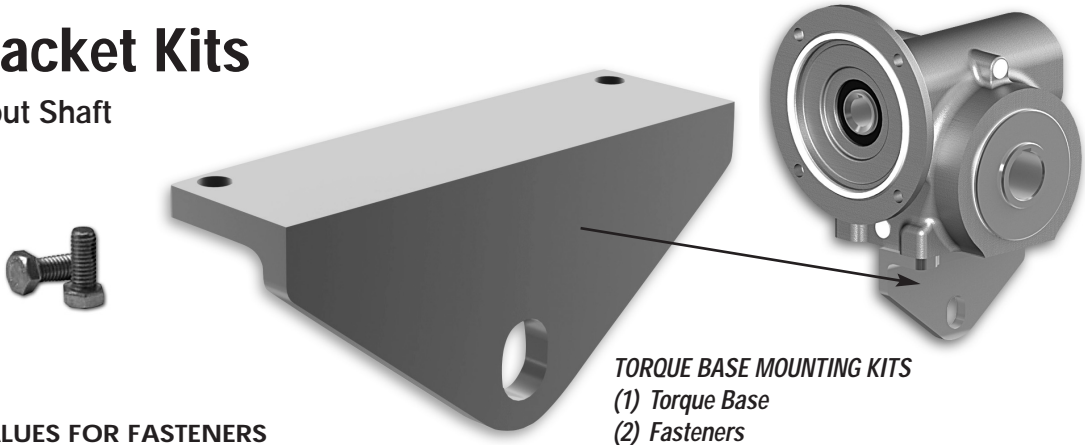




Stainless Conveyor Drive

Torque Arm Bracket Kits

For use with Hollow Output Shaft
Models (MDSS, MPSS)



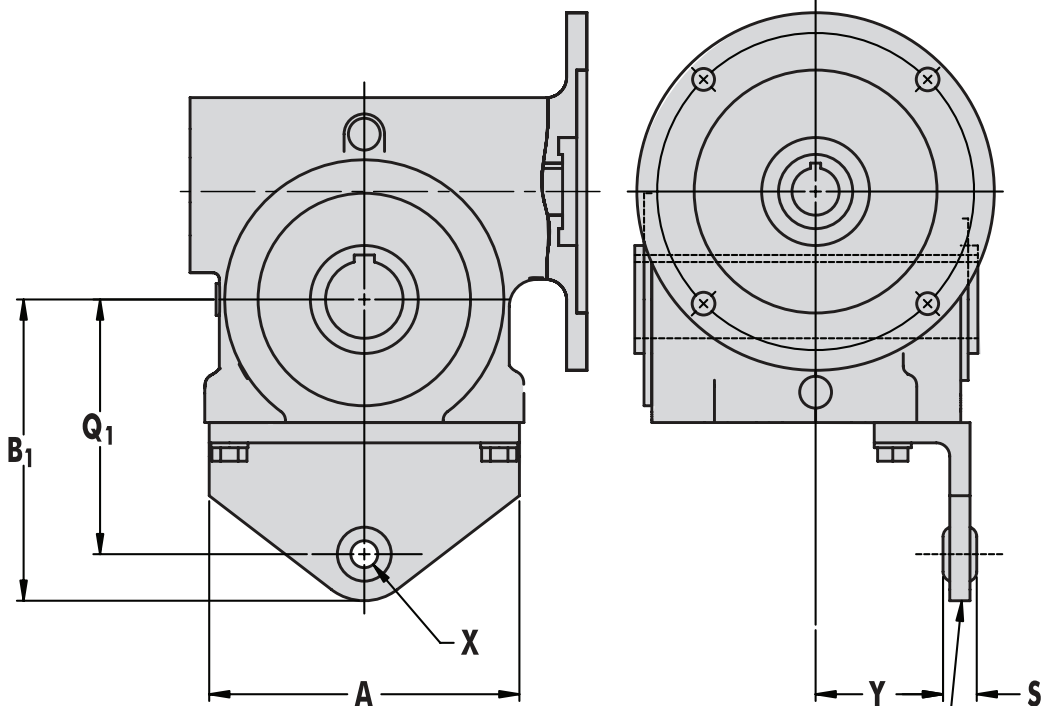
TORQUE BASE MOUNTING KITS
(1) Torque Base
(2) Fasteners

RECOMMENDED TORQUE VALUES FOR FASTENERS

Reducer Size	Fastener Size	Tightening Torque (lbf-in)
S17	5/16-18	200
S20 - S24 - S26	3/8-16	360
S30	7/16-14	580

MPSS SHOWN WITH MOUNTED (R) BRACKET KIT

Hollow Output Shaft



MULTIPLE ASSEMBLY POSITIONS AVAILABLE

TORQUE ARM BRACKET DIMENSIONS

Size	A	B ₁	Q ₁	S	X	Y	Kit #
S17	5.13	5.36	4.50	0.63	0.50	2.25	TK9952720
S20	5.75	5.58	4.78			2.36	TK9952721
S24	6.00	5.80	4.94			2.38	TK9952722
S26	7.25	6.24	5.38			2.88	TK9952723
S30	7.63	6.80	5.78			3.50	TK9952724

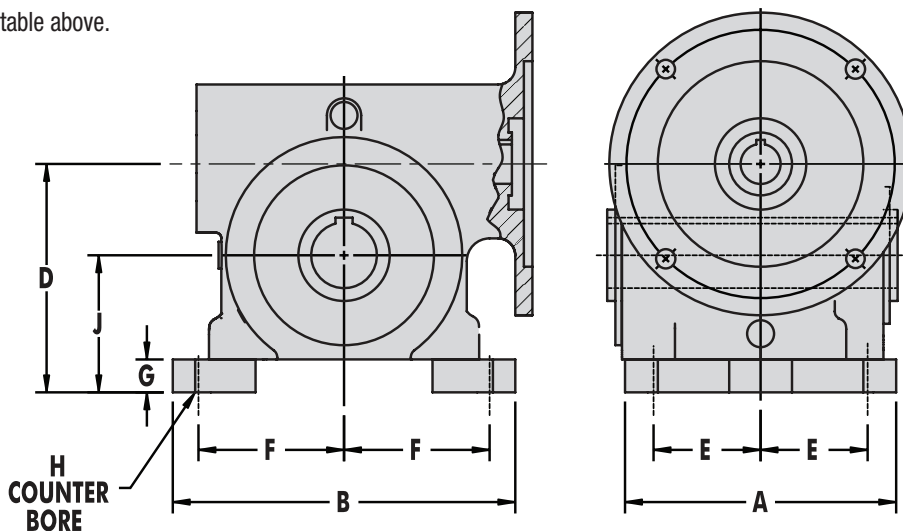
RECOMMENDED TORQUE VALUES FOR BASE FEET/SUPPORT STRUCTURE FASTENERS

Reducer Size	Fastener Size	Tightening Torque (lbf-in)
S17 - S20	3/8-16	360
S24	7/16-14	580
S26 - S30	1/2-13	890

INSTALLATION PROCEDURES

1. Verify all components listed above are available and are the correct size for the reducer to be mounted.
2. Be sure all surfaces, tools and hands are clean and free of ferrous particulate. Ferrous particles can cause rust to occur on the surface of the stainless steel.
3. Install the two base feet to the bottom surface of the reducer using 4 of the socket head cap screws. Apply a small amount of thread locking compound to each fastener prior to installation. Tighten the stainless steel fasteners per the torque table above.

4. Install the reducer in its operating location using the other 4 socket head cap screws. Apply a small amount of thread locking compound to each fastener prior to installation. Tighten the stainless steel fasteners per the torque table above.
5. Install the socket head cap screw covers to prevent water from collecting in the cap screw pockets. A food grade RTV sealant may also be used to fill and seal these cavities if desired.



Size	A	B	D	E	F	G	H	J	Kit #
S17	5.63	6.88	4.50	2.25	2.88	0.69	3/8 SHCS	2.75	BK9998140
S20	5.94	7.50	5.00	2.34	3.19	0.72		3.00	BK9998141
S24	6.13	8.29	5.63	2.44	3.53	0.75	7/16 SHCS	3.25	BK9998142
S26	6.65	9.40	6.31	2.63	4.00			3.69	BK9998143
S30	7.63	11.00	7.38	3.06	4.75	0.88	1/2 SHCS	4.38	BK9998144

SHCS = Socket Head Cap Screw

PWS-198989-May 1/15
Printed in U.S.A.