



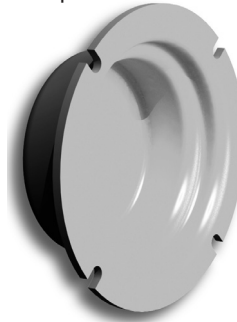
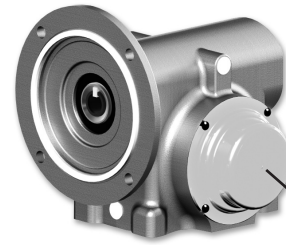
Stainless Conveyor Drive

Safety Cover Kits

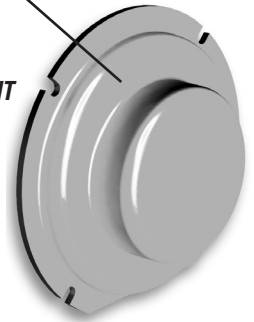
1. Determine whether a Single Safety Cover Kit or a Double Cover Kit is to be installed.
2. Follow the assembly steps below for the appropriate safety cover kit as required.



SINGLE SAFETY COVER KIT
(1) Safety Cover
(4) Press-In Polymer Fasteners



DOUBLE SAFETY COVER KIT
(2) Safety Covers
(8) Press-In Polymer Fasteners



INSTALLATION PROCEDURES - SINGLE SAFETY COVER KIT

1. Confirm the cover is correct for the housing by verifying that the holes in the housing match those in the cover.
2. If the cover is to be mounted on the same side as the driven output shaft, then the cover will need to be opened up with a hole saw to allow the driven shaft to pass through it. A centering feature is provided on the inside of the cover for this purpose. It will also need to be cut into two halves to allow cover installation and removal after the reducer is installed into its operation location. A band saw works well for cutting the cover in half. Be sure to saw the round hole before cutting the cover in half.
3. Locate the safety cover over the output shaft and press in the polymer fasteners.
4. NOTE: If the reducer is mounted at an angle, a weep hole may need to be drilled in the safety cover to avoid water collection.

INSTALLATION PROCEDURES - DOUBLE SAFETY COVER KIT

1. Confirm the covers are correct for the housing by verifying that the holes in the housing match those in the covers. Note that the cover is different for each side of the reducer.
2. Determine which side of the conveyor drive will contain the driven output shaft. The cover that will be installed on that side will need to be opened up with a hole saw to allow the driven shaft to pass through it. A centering feature is provided on the inside of the cover for this purpose. It will also need to be cut into two halves to allow cover installation and removal after the reducer is installed into its operation location. A band saw works well for cutting the cover in half. Be sure to saw the round hole before cutting the cover in half.
3. Locate the inside safety cover halves over the driven output shaft and press in the polymer fasteners.
4. Locate the outer safety cover over the output shaft and press in the polymer fasteners.
5. NOTE: If the reducer is mounted at an angle, a weep hole may need to be drilled in one of the safety covers to avoid water collection.

| Size | Cover Side | N _L | N _R | Ø _L | Ø _R | Kit # |
|------|------------|----------------|----------------|----------------|----------------|------------|
| S17 | Both | 4.13 | 3.75 | 4.63 | 3.50 | CK9952710 |
| | Left | | - | | - | CK9952710L |
| | Right | - | 3.75 | - | 3.50 | CK9952710R |
| S20 | Both | 4.35 | 4.00 | 5.13 | 4.19 | CK9952711 |
| | Left | | - | | - | - |
| | Right | - | 4.00 | - | 4.19 | CK9952711R |
| S24 | Both | 4.39 | 4.03 | 5.75 | 4.44 | CK9952712 |
| | Left | | - | | - | - |
| | Right | - | 4.03 | - | 4.44 | CK9952712R |
| S26 | Both | 4.81 | 4.25 | 6.44 | 4.90 | CK9952713 |
| | Left | | - | | - | - |
| | Right | - | 4.25 | - | 4.90 | CK9952713R |
| S30 | Both | 5.19 | 4.56 | 7.46 | 5.28 | CK9952714 |
| | Left | | - | | - | - |
| | Right | - | 4.56 | - | 5.28 | CK9952714R |

