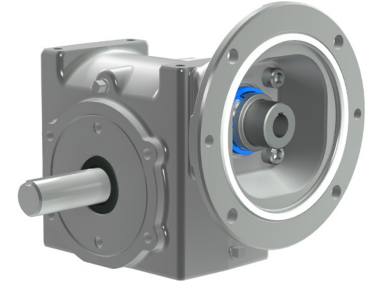


RD Speed Reducer Interchange Guide

The Winsmith RD product line offers a fret-free motor connection system that provides, quick motor replacement. The RD Speed Reducers are dimensionally interchangeable with most commonly used right-angle speed reducers and have unparalleled performance.



TECHNICAL INFORMATION	
Ratio	5:1-100:1
Input Horsepower	Up to 12 HP
Output Torque	200-3500 lbf.-in.
Sizes	1.33 in.-3.00 in. Center Distances

Key Features

- **Universal Lubricant Level**
 - One level for all mounting positions
 - Mobile Glygoyle* 460 H1 registered lubricant
- **Fret-Free Motor Connection**
 - Quick motor removal
- **Interchangeable Mounting Options**
 - Easy conversion
- **WinGuard™ 316 Stainless Epoxy Coating**
 - Stainless flake creates a corrosion barrier
 - Standard on all products
 - ASTM B-117 1000 hour salt spray test proven
- **The RD Guarantee Program**
 - Reduces downtime and inventory
- **Compact Design**
 - Performance of coupled products
 - Compactness of a quill
- **Smoother Housing**
 - Provides easy wash down

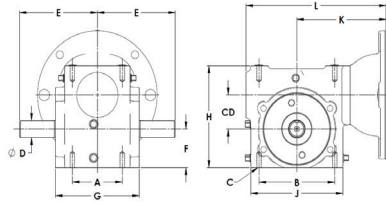
Applications

- Food Processing • Processing Equipment
- Material Handling



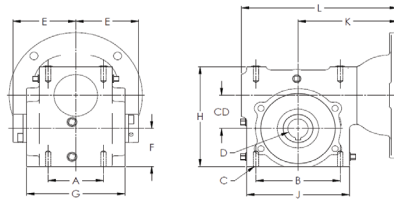
Hub City* PowercubeX Interchange Guide

Solid Shaft



Brand	Product Line	CD	A	B	C	D	E	F	G	H	J	Quill Input				Coupled Input			
												K		L		K		L	
												56C 140TC	180TC	56C 140TC	180TC	56C 140TC	180TC	56C 140TC	180TC
Winsmith	RD	1.33	2.00	3.25	5/16-18 x .56	0.625	4.00	1.72	3.88	4.63	3.94	4.38	-	6.63	-	4.38	-	6.63	-
Hub City	PowercubeX	1.33	2.00	3.25	5/16-18 x .50	0.625	3.25	1.56	3.12	4.08	4.12	3.46	-	6.07	-	6.07	-	8.68	-
Winsmith	RD	1.75	2.75	4.19	5/16-18 x .63	0.875	4.31	1.99	4.63	5.25	5.09	4.94	-	7.94	-	4.94	-	7.94	-
Hub City	PowercubeX	1.75	2.75	4.19	5/16-18 x .63	0.750	3.50	1.88	3.44	5.00	5.16	4.09	-	7.32	-	6.69	-	9.92	-
Winsmith	RD	2.00	2.88	5.00	3/8-16 x .63	1.000	4.69	2.28	4.38	5.81	5.91	5.06	-	8.19	-	5.06	-	8.19	-
Hub City	PowercubeX	2.064	2.88	5.00	3/8-16 x .70	0.875	4.25	2.44	4.12	6.00	5.88	4.46	-	8.07	-	7.07	-	10.68	-
Winsmith	RD	2.38	2.88	5.00	3/8-16 x .75	1.125	5.14	2.50	5.63	6.81	6.10	5.50	6.02	9.12	9.64	5.50	6.02	9.12	9.64
Hub City	PowercubeX	2.38	2.88	5.00	3/8-16 x .69	1.125	5.14	2.50	4.06	6.94	6.12	4.63	5.06	8.40	8.83	7.76	8.76	11.53	12.53
Winsmith	RD	2.63	3.38	6.38	3/8-16 x .75	1.125	5.63	2.94	5.63	7.50	7.36	5.70	6.22	9.58	10.10	5.70	6.22	9.58	10.10
Hub City	PowercubeX	2.63	3.38	6.38	3/8-16 x .70	1.125	4.50	2.94	4.50	7.44	7.20	5.19	5.19	9.52	10.14	8.32	9.32	12.65	13.65
Winsmith	RD	3.00	4.00	7.00	7/16-14 x .88	1.250	6.75	3.25	7.50	8.25	8.13	6.05	6.56	10.24	10.75	6.05	6.56	10.24	10.75
Hub City	PowercubeX	3.00	4.00	7.00	7/16-14 x .88	1.250	6.75	3.25	5.25	8.88	8.12	5.95	6.15	10.79	10.99	8.82	9.82	13.66	14.66

Hollow Shaft



Brand	Product Line	CD	A	B	C	D	E	F	G	H	J	Quill Input				Coupled Input			
												K		L		K		L	
												56C 140TC	180TC	56C 140TC	180TC	56C 140TC	180TC	56C 140TC	180TC
Winsmith	RD	1.75	2.75	4.19	5/16-18 x .63	.625, .750, .875, .938, 1.000	3.13	1.99	4.88	5.25	5.09	4.94	-	7.94	-	4.94	-	7.94	-
Hub City	PowercubeX	1.75	2.75	4.19	5/16-18 x .63	.938, 1.000	2.41	1.88	3.44	5.00	5.16	4.09	-	7.32	-	6.69	-	9.92	-
Winsmith	RD	2.00	2.88	5.00	3/8-16 x .63	.750, .938, 1.000, 1.125, 1.188, 1.250, 1.438	3.31	2.28	5.25	5.81	5.91	5.06	-	8.19	-	5.06	-	8.19	-
Hub City	PowercubeX	2.064	2.88	5.00	3/8-16 x .70	.9375, 1.000, 1.1875, 1.250, 1.4375, 1.500	2.78	2.44	4.12	6.00	5.88	4.46	-	8.07	-	7.07	-	10.68	-
Winsmith	RD	2.38	2.88	5.00	3/8-16 x .75	1.000, 1.063, 1.125, 1.188, 1.250, 1.313, 1.438, 1.500	3.44	2.50	5.50	6.81	6.10	5.50	6.02	9.12	9.64	5.50	6.02	9.12	9.64
Hub City	PowercubeX	2.38	2.88	5.00	3/8-16 x .69	1.000, 1.125, 1.188, 1.250, 1.438, 1.500	3.00	2.50	4.06	6.94	6.12	4.63	5.06	8.40	8.83	7.76	8.76	11.53	12.53
Winsmith	RD	2.63	3.38	6.38	3/8-16 x .75	1.000, 1.063, 1.125, 1.188, 1.250, 1.313, 1.375, 1.438, 1.500, 1.625, 1.688	3.50	2.94	5.38	7.50	7.36	5.70	6.22	9.58	10.10	5.70	6.22	9.58	10.10
Hub City	PowercubeX	2.63	3.38	6.38	3/8-16 x .70	1.000, 1.188, 1.250, 1.438, 1.500	2.97	2.94	4.50	7.44	7.20	5.19	5.81	9.52	10.14	8.32	9.32	12.65	13.65
Winsmith	RD	3.00	4.00	7.00	7/16-14 x .88	1.188, 1.250, 1.375, 1.438, 1.500, 1.625, 1.688, 1.750, 1.875, 1.938, 2.000	3.69	3.25	7.50	8.25	8.13	6.05	6.56	10.24	10.75	6.05	6.56	10.24	10.75
Hub City	PowercubeX	3.00	4.00	7.00	7/16-14 x .88	1.188, 1.250, 1.438, 1.500, 1.625, 1.688, 1.750, 1.875, 1.938, 2.000, 2.188	3.75	3.25	5.25	8.88	8.12	5.95	6.15	10.79	10.99	8.82	9.82	13.66	14.66

Hub City is a registered trademark of Regal Beloit Corporation, and has no affiliation with Peerless Winsmith, Inc. Mobile Glygoyle is a registered trademark of Mobil, and has no affiliation with Peerless Winsmith, Inc.

HBD Industries, Inc. and its subsidiaries cannot accept responsibility for possible errors in catalogues, brochures, other printed materials, and website information, and may change, delete, add to or otherwise modify such information without notice. HBD reserves the right to alter its products without notice, including products already on order, provided that such alteration can be made without changes being necessary in specifications already agreed to. All trademarks in this material are the property of the HBD Industries Inc., or its subsidiaries. The HBD and HBD brands logotype, are trademarks of HBD Industries, Inc. All rights reserved.

PEERLESS WINSMITH, INC.
172 EATON STREET
SPRINGVILLE, NY
14141
TEL: 716 592 9310
FAX: 716 592 9546